

INSTALLATION INSTRUCTIONS

1. Before installation, please read the instructions carefully.

2. Confirm the packaging of the product is intact and the quantity is correct.

3. Confirm the product is not damaged and the quantity is correct.

4. Before installation, please confirm the inlet opening is clean and free of debris.

5. Please refer to the diagram for the correct installation method.

REMOVAL INSTRUCTIONS

1. Please refer to the diagram for the correct removal method.

2. Please refer to the diagram for the correct removal method.

3. Please refer to the diagram for the correct removal method.

WARNING

* Do not touch the surface of the product directly with your hands.

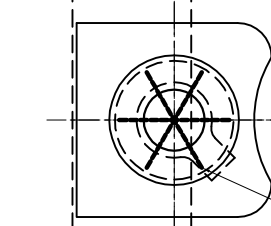
* Do not touch the surface of the product directly with your hands.

* Do not touch the surface of the product directly with your hands.

CAUTION

* Do not touch the surface of the product directly with your hands.

* Do not touch the surface of the product directly with your hands.



INSTRUCCIONES DE INSTALACION

1. Antes de la instalación, lea detenidamente las instrucciones.

2. Confirme que el empaque del producto está intacto y que la cantidad es correcta.

3. Confirme que el producto no está dañado y que la cantidad es correcta.

4. Antes de la instalación, confirme que la abertura de entrada está limpia y libre de residuos.

5. Consulte el diagrama para el método de instalación correcto.

INSTRUCCIONES PARA EL DESMONTAJE

1. Consulte el diagrama para el método de desmontaje correcto.

2. Consulte el diagrama para el método de desmontaje correcto.

3. Consulte el diagrama para el método de desmontaje correcto.

ADVERTENCIA

* No toque directamente la superficie del producto con sus manos.

* No toque directamente la superficie del producto con sus manos.

* No toque directamente la superficie del producto con sus manos.

PRECAUCION

* No toque directamente la superficie del producto con sus manos.

* No toque directamente la superficie del producto con sus manos.

INSTALLATION INSTRUCTIONS

1. Before installation, please read the instructions carefully.

2. Confirm the packaging of the product is intact and the quantity is correct.

3. Confirm the product is not damaged and the quantity is correct.

4. Before installation, please confirm the inlet opening is clean and free of debris.

5. Please refer to the diagram for the correct installation method.

REMOVAL INSTRUCTIONS

1. Please refer to the diagram for the correct removal method.

2. Please refer to the diagram for the correct removal method.

3. Please refer to the diagram for the correct removal method.

WARNING

* Do not touch the surface of the product directly with your hands.

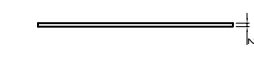
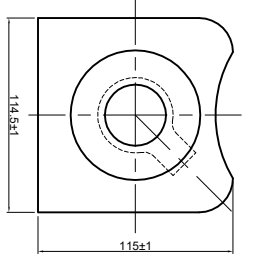
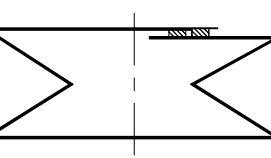
* Do not touch the surface of the product directly with your hands.

* Do not touch the surface of the product directly with your hands.

CAUTION

* Do not touch the surface of the product directly with your hands.

* Do not touch the surface of the product directly with your hands.



Quantity	Name	Part no.	Material	Weight
	Shanghai ZengXi Purifying Technology CO., LTD			
	DWN BY		PART NAME	
	CHK BY			
	APP BY			
	DIMENSIONS			
	MM		PART No. SHW1030T02	
	SHEET		REV 1A	